

1/2" center to center
Fine Open

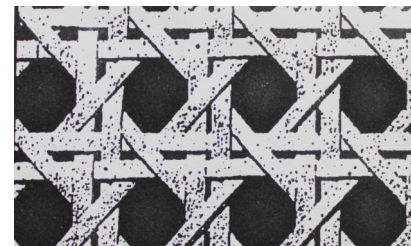
Levair's *Woodworking* & Caning Supplies

Celine & Kevin Levair

RR#2, 94 Arbor Vitae Road, Barry's Bay, Ontario, K0J 1B0

613-756-5192

info@levairscaningsupplies.ca www.levairscaningsupplies.ca



5/8" centre to centre
Medium open

TERMS AND CONDITIONS:

- We accept VISA, Mastercard, PayPal through the web site or E-transfer by email.
- We can order many materials that we do not stock in regular inventory, however, allow an extra month for delivery, on special orders, payment must be made in advance.
- Ont. +13% HST. Alberta, BC, Manitoba, NWT, Sask, Yukon, Que. +5% GST. NS, NB, NFLD and PEI +15% HST.
- Money back guarantee if goods returned promptly (within one month).
- Prices subject to change without notice.
- Most weights and lengths quoted are approximate.
- Shipping through Canada Post, Expedited or courier.

We are mainly a MAIL-ORDER SUPPLIER, however orders can be picked up, please contact for appointment.

STRAND CANE – seat frames must have drilled holes. Use chart below to determine size required. One hank is 1000 feet and should do 4 or more average seats (each 144-168 sq inches). Cane can be stained but does not colour evenly. Other finishes will make it brittle. We recommend leaving it natural. * most popular sizes.

SIZE OF CANE	DIAMETER OF DRILLED HOLES	DISTANCE BETWEEN CENTER TO CENTER HOLES IN FRAME	WIDTH OF CANE	PRICE FULL HANK 1000 ft	PRICE HALF HANK 500 ft	PRICE Nantucket Cane 500 ft hanks
Carriage Extra superfine			1.25mm	---	---	\$21.00
Carriage Superfine	1/8"	5/16" to 3/8"	1.50mm	---	---	\$22.00
Carriage Fine	1/8"	3/8"	1.75mm	----	--	\$23.00
Superfine	1/8"	3/8"	2 mm	\$46.00	\$24.00	\$25.00
Fine Fine	3/16"	1/2"	2.25 mm	\$49.00	\$25.00	\$27.00
* Fine	7/32"	5/8"	2.5 mm	\$53.00	\$27.00	\$29.00
* Narrow-Medium	1/4"	11/16"	2.75 mm	\$56.00	\$29.00	\$32.00
*Medium	1/4"	3/4"	3 mm	\$65.00	\$34.00	\$38.00
Common	5/16"	7/8"	3.5 mm	\$68.00	\$35.00	\$48.00
Plastic Cane, Medium 3mm	1/4" hole size	3/4" center to	1,000 ft \$60.00	500 ft \$31.00	250 ft \$16.00	200 ft \$13.00

BINDING CANE – 500 ft. per hank. Used to cover the drilled holes. Each chair requires 5 or 6 ft. Can be used for wrapping baskets, wicker also.

SMALL – 4 to 4 1/2 mm - \$40.00, or .15 ¢ per foot, **MEDIUM** – 5 to 5 1/2 mm – \$50.00, or .18 ¢ per foot, **LARGE** – 6 to 6 1/2 mm – \$55.00, or .20 ¢ per foot large

SLAB RATTAN – 8 mm, Shaved. Approx 225 feet. \$40.00 per 1 pound coil,

CANING PEGS – hardwood \$7.95 per dozen. **CANING AWL** – \$9.95 with a wooden handle. **COMCRAFT AWL** – \$3.99

CANE WEBBING— Seat frame must have groove routed in it. (Can be used on cupboard doors, etc. and held in place with trim). Add 1" to 2" to size of actual distance between grooves.. Prices quoted are per running foot. But you can quote to the inch, If 15" by 18" width is needed, figure prices as follows: 15" ÷ 12 = 1.25 ft. x \$17.00 = \$21.25. Remember to give two dimensions when ordering.

WEAVE	Center to Center	12"	14"	16"	18"	24"	30"	36"	40"
Superfine Open	3/8"				\$30.00	\$38.00			
Fine Fine Open	7/16"				\$25.00	\$28.00			
Fine Open	1/2"	\$14.00	\$16.00	\$18.00	\$21.00	\$30.00	\$32.00	\$40.00	\$68.00 (48")
Fine Open, Un-bleached				\$18.00	\$21.00	\$30.00			
Paper Fine open	1/2"					\$18.00			
Medium Open	5/8"				\$21.00	\$30.00			
Common Open	3/4"				\$21.00	\$30.00			
Giant Open	1"				\$21.00	\$30.00			
Fine Radio 5 x 5	2.5mm strand				\$21.00	\$30.00			
Paper Radio 5 x 5	3 mm strand					\$18.00			\$30.00
Fine Fine Radio 6 x 6	2.25mm				\$21.00	\$30.00		\$40.00	
Paper Radio 6 x 6	2.25 mm					\$18.00			\$30.00
Fine Close						\$25.00			
Medium Close					\$17.00	\$20.00		\$25.00	
Medium Swedish	1 x 2 weave					\$30.00			
Modern Box	2 x 2 weave					\$30.00			
Fine Herringbone						\$30.00			
Medium Herringbone						\$30.00			

DISCOUNTS Of one weave and size: 10 ft. —15% 25 ft. —20%

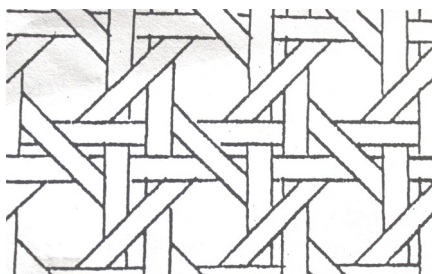
SPLINE NUMBER	GROOVE WIDTH	ACTUAL SPLINE SIZE
#7	5/32	7/64
#7 1/2	11/64	9/64
* #8	3/16	5/32
#8 1/2	13/64	11/64
* #9	7/32	3/16
#9 1/2	1/4	7/32
#10	5/16	1/4
#12	3/8	19/64

When possible, enclose a piece of old spline for matching, Sizes can be planed or sanded to make smaller,
 #7 to #8 1/2 are .30 ¢ per foot, # 9 , #9.5 are .40¢ and #10 & #12 are .50¢ per foot.

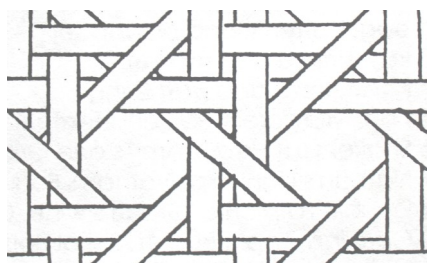
* are the most used sizes



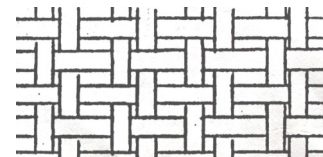
MEDIUM CLOSE
 ←18" 24" 36" →



COMMON OPEN (3/4" CENTERS)



GIANT OPEN (1" CENTER-TO-CENTER)



SWEDISH
 OR MODERN
 1 x 2 (1 strand) ←24" →

CANE WEDGES -Tapered hardwood. Used to pound in web and spline, .75 ¢ each

PLASTIC FLAT & ROUND REED GAUGE— FLAT 3/16" TO 1", ROUND— #0 TO #17—\$2.99

RUSH SHUTTLE—shaped like the letter H. Keeps seagrass or rush from tangling while weaving. Made of 1/4" plywood. \$3.50 each. Also NEW rush shuttle letter I shaped, for narrower spaces, made from 1/4" mahogany \$3.50 each

SEAGRASS—a natural material made from 3 ply twisted grass. One 3 lb. coil should do one chair, up to 288 square inches

#4—1/4" diameter—\$19.95 (3lb)

#3 - 3/16" diameter—\$19.95 (3lb.) #2 - 5/32" diameter \$19.95 (3 lb.) #1 - 3/32" diameter - \$19.95 (3 lb.)

1 lb coils — #00—2 /2.25mm \$10.50, #0— 2.5 / 3.00 mm—\$10.50, #1—3 /3.5mm \$10.50, #2—3.5/4mm \$10.50

PRETWISTED NATURAL RUSH—#5 is 4 mm to 5 mm price per pound \$10.95 , can cover around 122 square inches

Small dia. natural rush— 2 to 4 mm price per pound \$9.95.

FIBER RUSH—made from twisted paper. Kraft brown in colour. 2lb. Should do an average chair (14 x 14").

Full Reels (17 + lbs.) single twist **3/32", 4/32", 5/32", 3/16" (6/32"), 7/32", 3ply - 6/32", 7/32"** - \$7.00 per pound. Partial reels per lb. \$10.00 up to 9lbs. Then \$8.50 per lb for 10 up to 16 lbs.

PAPER SPLINT—1/2", 5/8" and 3/4" \$5.00 to \$7.00 per pound

Imported Directly from Denmark—DANISH SEAT CORD -1/8" diameter twisted paper - 10 lb. coil, 625 meters (Approx. 200 ft. per lb). Each chair requires about 2 lbs.

1/8" Natural Laced \$165.00 1/8" Natural Unlaced \$165.00 1/8" Black Unlaced \$250.00 1/8" White Unlaced \$160.00

Natural Laced 5/32" (440 meters) \$185.00 5/32" Black Laced (440 meters) \$269.00 *All also by the pound, check web site for per lb. Pricing.

L Nails- for Danish cord weaving 100 pkg—\$10.95, .11 cents each

FLAT REEDS	APPROX. FT PER COIL	PRICE
11/64"	410	\$19.95
3/16"	400	\$19.95
1/4" (Natural) or (Smoked \$25.95)	370	\$19.95
3/8" (Natural) or (Smoked \$25.95)	265	\$23.50
1/2" (Natural) or (Smoked \$25.95)	185	\$23.50
5/8" (Natural) or (Smoked \$25.95)	120	\$19.95
3/4" (Natural) or (Smoked \$25.95)	90	\$19.95
7/8"	80	\$19.95
1"	75	\$23.50

FLAT OVAL REED (top has slight curve)

11/64"	350	\$19.95
3/16"	300	\$19.95
1/4" (Natural) or (Smoked \$25.95)	275	\$19.95
3/8" (Natural) or (Smoked \$25.95)	175	\$19.95
1/2"	90	\$19.95
5/8" (Natural) or (Smoked \$25.95)	60	\$19.95
3/4"	40	\$19.95

ROUND REED	SIZE	APPROX. FT	PRICE
#0	1.25 mm	2000	\$19.95
#1	1.5 mm	1600	\$19.95
#2 (Natural) or (Smoked \$25.95)	1.75 mm	1100	\$19.95
#3 (Natural) or (Smoked \$25.95)	2.25 mm	750	\$19.95
#4 (Natural) or (Smoked \$25.95)	2.75 mm	500	\$19.95
#5 (Natural) or (Smoked \$25.95)	3.50 mm	350	\$19.95
#6 (Natural) or (Smoked \$25.95)	4.25 mm	200	\$19.95
#7	5.25 mm	150	\$19.95
#8	5.75 mm	110	\$19.95
#9	6.50 mm	100	\$19.95
#10	7.50 mm	70	\$19.95

LARGE ROUND REEDS/ size	# Feet in a pound	Price by the Pound	Or Price by the foot
#12 – 10 mm (3/8")	35 feet	\$20.75	.50 cents a ft
#15 – 13 mm (1/2")	20 feet	\$20.75	.99 a ft
#18 – 16 mm (5/8")	10 feet	\$20.75	\$1.98 a ft

1/2 ROUND REEDS – Great for Rims and Handles – 1lb. Coils **\$22.95 each**

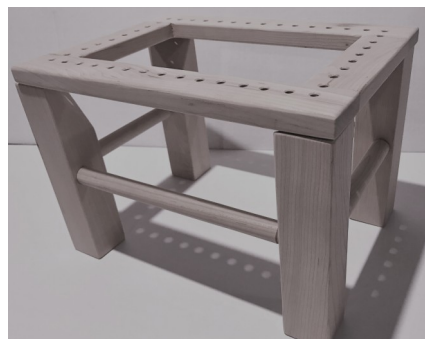
1/4" (approx. 150ft), 3/8" (approx 70 ft), 1/2"(approx 35 ft) & 5/8" (approx 20 ft) 3/4" (approx 16 ft)

SHAKER TAPE – (cotton tape woven like flat reed in splint seats). 1" wide. Full 75 yard rolls – \$155.00 or \$2.50 yard - In Stock colors: Black, Blue, Navy Blue, Cranberry, Red, Hunter Green, Grey, Beige, Natural, Olive, Brown, Butternut and Wine.

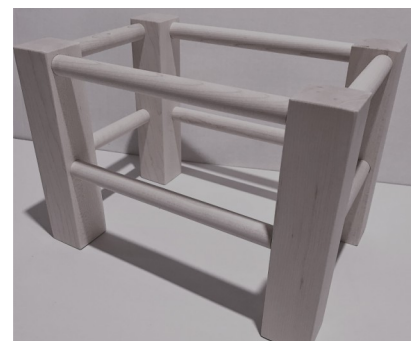


SMALL ROCKER KIT \$59.95
Ready to assemble with enough binding cane to weave back and seat

HARDWOOD KITS



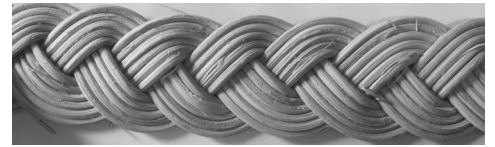
HAND CANING STOOL KIT
Includes wood frame parts and cane, awl, pegs
12" x 9" x 9" H
\$49.95



FOOT STOOL KIT
Includes choice of Danish cord, fiber rush or seagrass
12" x 9" x 9" H
\$50.45 to \$51.95 (\$39.95 frame alone)



BASKET MAKING SUPPLIES



PAPER BRAID.

1/2" WIDE .40 CENTS PER FT

PLAITED SEAGRASS

5/8" - 20 foot coil - \$8.99

7/8" - 20 foot coil - \$9.99

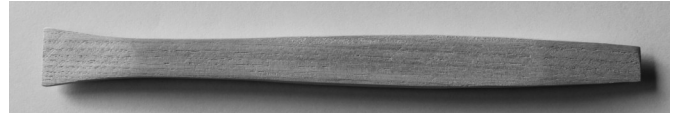


ROUND REED BRAID

3/4" Wide \$1.50 per foot

7/8" wide \$2.50 per foot

WOODEN PACKING TOOL \$2.95



SPOKE WEIGHT - \$14.95

22 oz, 16 inches long, imprinted inch scale from center outward



BASKET TREE DYES (powered by RIT)

1/3 OZ. PACK. Enough to do 1–2 lbs. reed—\$2.50. Colours— Amish Blue, Black, Burgundy, Cherry, Chestnut, Chocolate, Denim, Driftwood, Dusty Rose, Egyptian Red, Georgia Peach, Gold, Hunter Green, Lemon, Moss Green, Navy, Oak, Orange, Plum, Reseda Green, Rust, Slate, Scarlet, Turquoise, Violet.

Slotted Pine Bases

Square

4 x 4—\$5.25 each

5 x 5—\$5.50

6 x 6—\$5.75

7 x 7—\$6.00

8 x 8—\$6.50

9 x 9—\$7.00

10 x 10 - \$8.00

11 x 11—\$9.00

12 x 12—\$10.00

Oval slotted

3.5" x 7.5" \$6.00

7" x 10" \$7.00

Oak Basket Feet

Mini (3/4" x 1" ft x 4" ext) 1.00 cents each

Small (3/4" x 1.75" foot x 5" ext) \$1.25 each

Medium (3/4" x 2.25" foot x 5" ext) \$1.50 each

Large (3/4" x 3" foot x 5" ext) \$1.75 each

Slotted Pine Bases

Round

3 inch x 1/2" —\$4.50 ea

4 inch x 1/2" or 3/4" —\$4.75

5 inch x 3/4" —\$5.00

6 inch x 3/4" —\$5.50

8 inch x 3/4" \$6.00

10 inch x 3/4" —\$7.50

12 inch x 3/4" - \$8.50

13 inch x 3/4" - \$10.50

15 inch x 3/4" - 11.50

Half Circle

5 x 10 slotted pine

\$8.00 each

Plywood Drilled Bases, 1/4"

(Specify odd or even holes)

5 x 8 Oval \$4.50

4 x 4 square \$4.00

7 x 7 square \$5.00

Round:

4" \$3.25

5" \$3.50

6" \$3.75

7" \$4.00

8" \$4.25

9" \$4.50

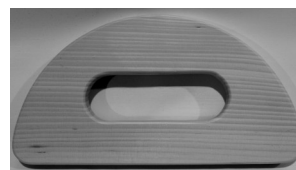
10" \$4.75

11" \$5.00

12" \$5.25

14" \$5.75

16" \$6.25



BASKET HANDLES

HEAVY DUTY BUSHEL HANDLE - Oak

3" wide x 6" tall x 1/2"	\$5.75 each
5" x 7.75" tall x 5/8"	\$6.50 each

SWING HANDLES

WITH RIVETS

8" X 12"	\$10.95
10" x 12"	\$11.95
10" x 15"	\$14.95
12" x 12"	\$12.95
12" x 15"	\$15.95
12" x 16"	\$16.95

HICKORY OR OAK - D SHAPED HANDLES

4" x 6" x 1/2"	\$4.25
7 1/2" x 6"	\$5.25
5" x 14" x 7/8"	\$6.75
6" x 8" x 7/8"	\$6.25
6" x 10" x 7/8"	\$6.50
6" x 13" x 7/8"	\$7.25
6" x 20" x 7/8"	\$9.00
8" x 10" x 7/8"	\$6.50
8" x 12" x 7/8"	\$6.75
8" x 20" x 7/8"	\$9.25
10" x 14" x 1 1/8"	\$7.25
12" x 12" x 7/8"	\$7.25
12" x 16" x 1 1/8"	\$9.50
14" x 10" x 1 1/8"	\$7.50
14" x 16" x 1 1/8"	\$10.50

SWING HANDLES

WITH EARS

6"	\$15.50
8"	\$16.50
10"	\$17.50
12"	\$18.50
Ear only	\$5.75 each

OPEN NOTCHED SIDE HANDLE – Oak

3" wide x 6.25" tall x 1/2"	\$4.75 each
5" x 10" x 1"	\$6.25 each

KEY BASKET FRAMES

4" x 1/2"	\$3.25
6" x 7/16"	\$4.50

WILLIAMSBURG HANDLES

5" x 9" x 7/8"	\$8.25
7" x 12" x 1 1/8"	\$9.25
12" x 18 1/2" x 1 1/8"	\$12.25

FLAT TOP U HANDLE WITH GRIP

10" x 6" x 5/8"	\$8.50
10" x 6" x 7/8"	\$8.50
14" x 12" x 1"	\$9.00
16" x 13" x 1"	\$9.25

SHARP D HANDLES

8" x 12" x 7/8"	\$6.50
10" x 14" x 7/8"	\$7.00

NOTCHED U HANDLES

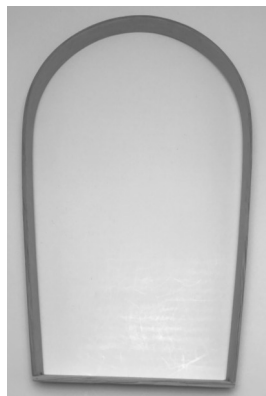
4" x 5" x 1/2"	\$4.25
6" x 7" x 1/2"	\$4.75
8" x 9" x 5/8"	\$5.25
8" x 9" x 7/8"	\$5.25
10" x 11" x 7/8"	\$5.75
12 x 13" x 7/8"	\$6.25
14" x 13" x 1"	\$7.25

ROUND HARD WOOD HOOPS

SIZE	LAMINATED	OAK
4" X 7/16"	.75	
6" x 1/2"		\$3.95
8" x 1/2"		\$4.95
10" x 3/4"		\$5.95
12" x 1/2"		\$5.95
12" X 3/4"		\$6.95

TULIP HANDLES

6 x 13 x 7/8" - \$6.75



MARKET BASKET RIMS

6" x 6" 1/2"	\$5.50
8" x 8" x 3/4"	\$6.50
10" x 10" x 7/8"	\$7.502
10" x 14" x 7/8"	\$9.75
12" x 12" x 1"	\$9.50
13" x 13" x 1"	\$10.00
18" x 18" x 1"	\$14.00

NOTCHED U FLAT TOP HANDLES

8" x 8" x 5/8"	\$7.00
10" x 9" x 7/8"	\$7.50
12" x 10" x 7/8"	\$8.50
14" x 10" x 1"	\$9.00
14" x 13" x 1"	\$9.50

OVAL OAK HOOPS

4" X 9" X 1/2"	\$3.95
8" x 12" x 3/4"	\$6.95
20" X 12" 1"	\$13.95